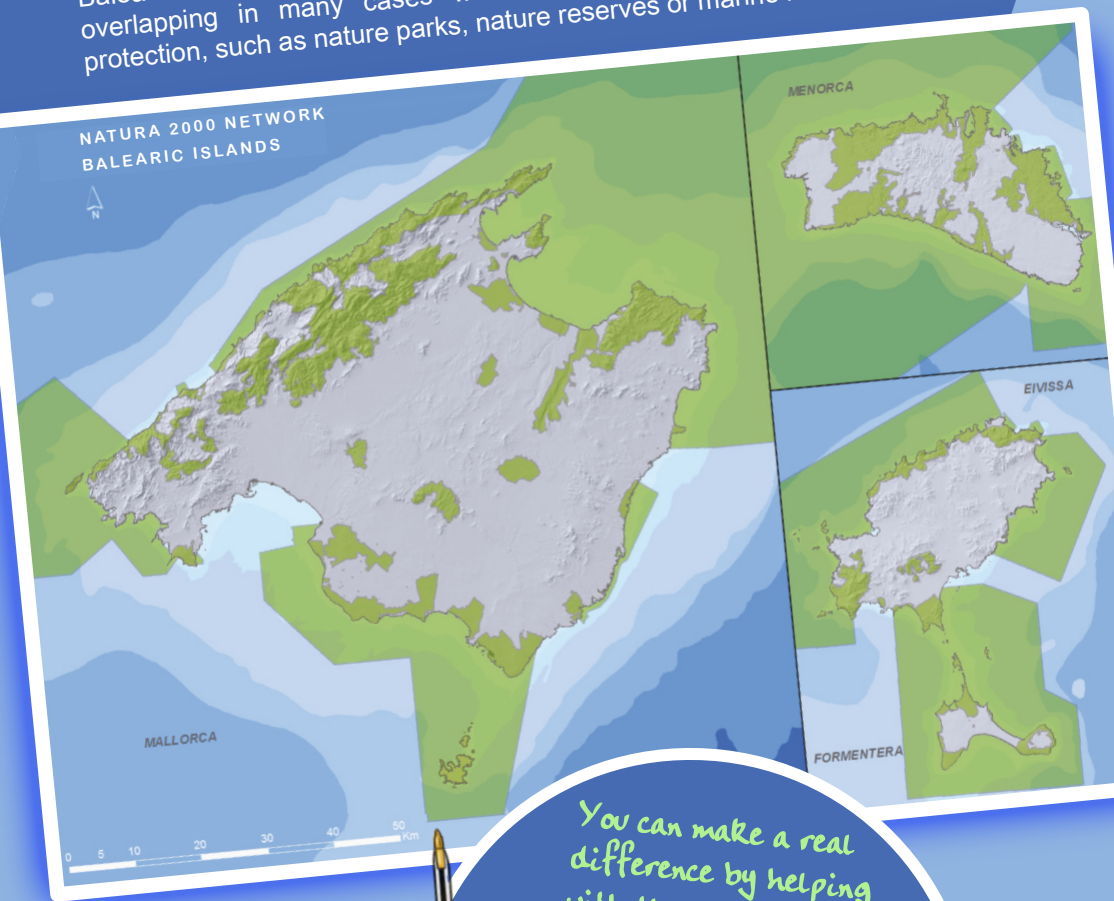


At present, a quarter of the land and marine surface area of the Balearic Islands is classified as part of the Natura 2000 Network, overlapping in many cases with other types of environmental protection, such as nature parks, nature reserves or marine reserves.



You can make a real difference by helping with the environment:

- ✓ When possible, collect any waste you may find.
- ✓ When stationary, turn off your engines.
- ✓ Use biodegradable detergents.



For additional information:



G CONSELLERIA
 O MEDI AMBIENT
 I TERRITORI
 B DIRECCIÓ GENERAL
 D'ESPAIS NATURALS
 I BIODIVERSITAT

xarxanatura@dgmambie.caib.es
xarxanatura.es | xarxanatura.caib.es
 Tel. 971 17 66 66
 Emergency telephone: 112

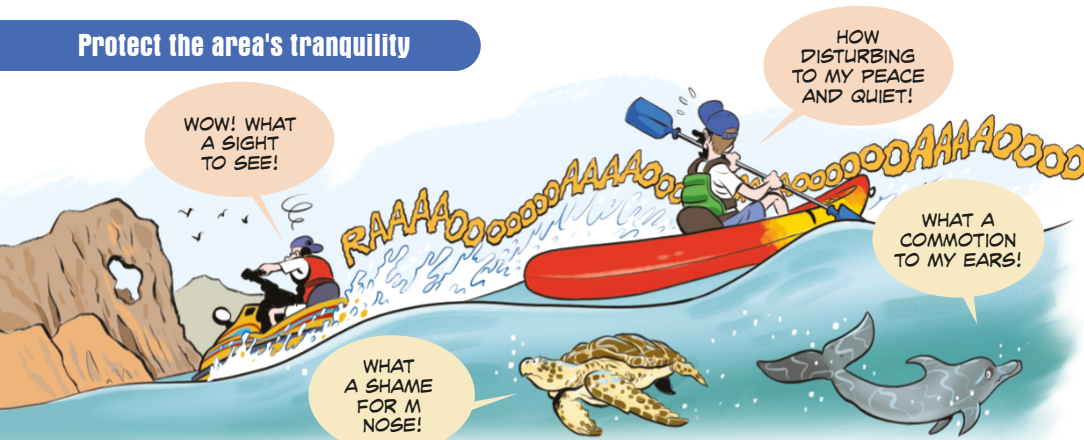
Best environmental practices at sea



The Natura 2000 Network is the principal tool for natural conservation in the European Union. It was born in 1992 with the approval of the Habitats Directive (92/43/CEE), forming the largest network of protected areas in the world. The protection of these areas aims to ensure the survival of the most valuable and threatened European species and habitats.

The increase in nautical activity and the widespread use of the sea are creating pressure and significantly affecting natural areas. Therefore, it's important to apply good environmental practices, as described below.

Protect the area's tranquility



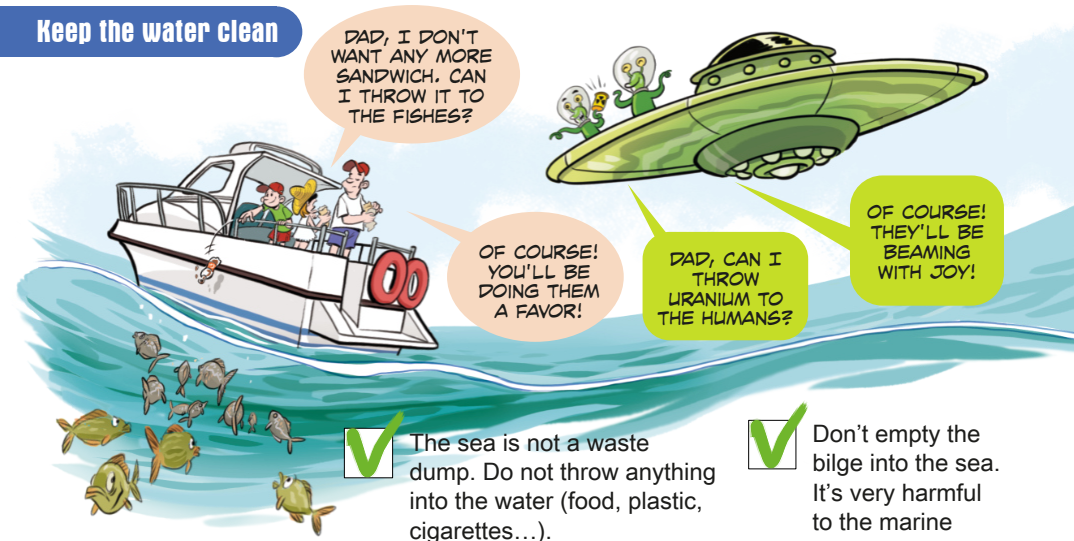
- ✓ Enjoy the sounds of nature. Slow your engine and avoid playing loud music.
- ✓ Do not go ashore on islets. They are an oasis for wildlife. Keep your distance so as not to disturb the animals.
- ✓ Remember that party boats are prohibited.

Respect marine animals



- ✓ If you see an injured animal, call emergency services at 112. Do not try to remove plastics from animals, as you could worsen the situation.
- ✓ If you see a dolphin, stay at least 60 metres away.
- ✓ Reduce your speed in general to avoid disturbing the animals' path or their rest.

Keep the water clean



- ✓ The sea is not a waste dump. Do not throw anything into the water (food, plastic, cigarettes...).
- ✓ Don't empty the bilge into the sea. It's very harmful to the marine biodiversity.

Fishing resources are limited



- ✓ Be sure to have valid and current fishing permits.
- ✓ Don't catch protected species and respect close season and size minimums. Throw back any accidental catches.

When snorkelling and scuba diving

- ✓ Control your buoyancy.
- ✓ Be careful in and around recesses and caves.
- ✓ Respect the wildlife.
- ✓ Don't feed the fish.
- ✓ Do not take anything with you.
- ✓ Do not anchor in posidonia seagrass.