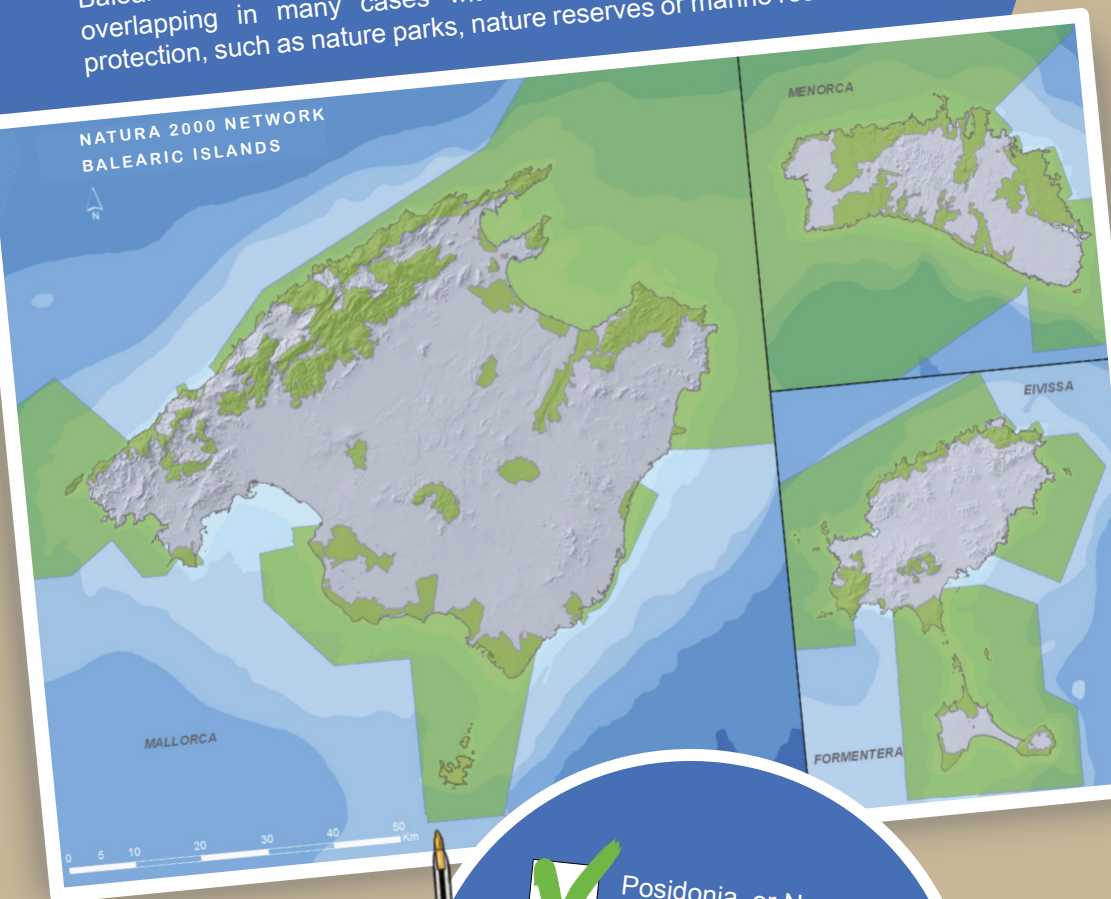


At present, a quarter of the land and marine surface area of the Balearic Islands is classified as part of the Natura 2000 Network, overlapping in many cases with other types of environmental protection, such as nature parks, nature reserves or marine reserves.



Posidonia, or Neptune grass, in the sand indicates high water quality. It is not waste.



By following these best practices, you're contributing to beach and coastal conservation.

For additional information:



© Jaume Balaguer

Best environmental practices on the coast



xarxanatura@dgmambie.caib.es
xarxanatura.es | xarxanatura.caib.es
Tel. 971 17 66 66
Emergency telephone: 112

Natura 2000 is a European network of sites of biodiversity conservation. It was founded in 1992 with the approval of the Habitats Directive (92/43/EEC) and is the most extensive network of protected areas on Earth. The protection of these areas aims to ensure the survival of the most valuable and threatened European species and habitats.

Increases in leisure activities along the coast are leading to added pressure and impact on natural areas, thus requiring the implementation of best environmental practices.

Do not disrupt the natural environment

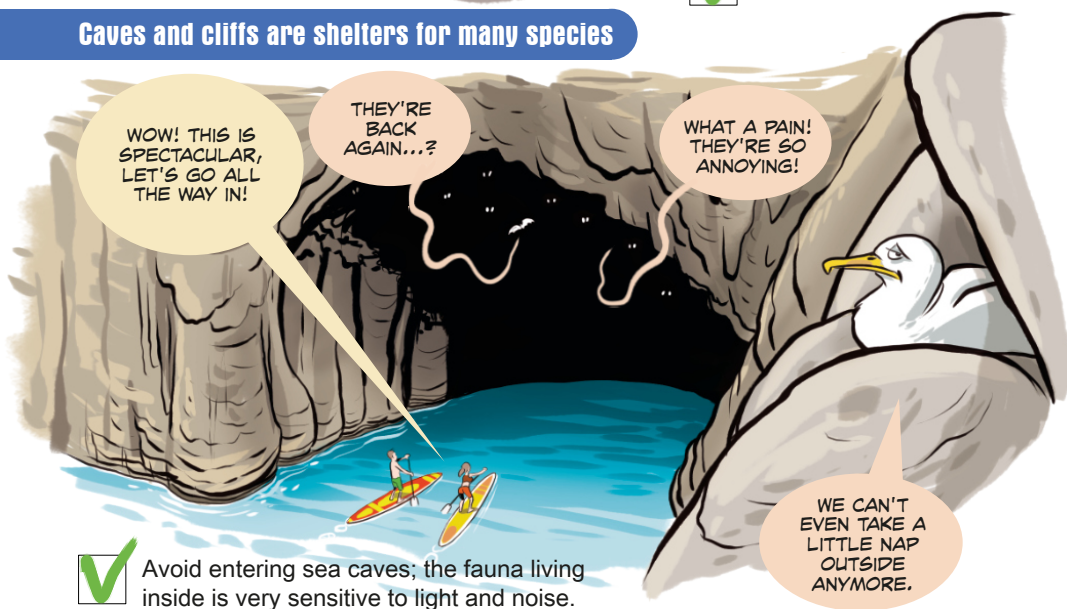


✓ Do not stack rocks and stones; it alters the shelters used by inhabiting species!

✓ Do not pull up or take any plants or animals, including their shells.

✓ Enjoy the sounds of nature.

Caves and cliffs are shelters for many species



✓ Avoid entering sea caves; the fauna living inside is very sensitive to light and noise.

✓ Many species of protected birds nest on the cliff face; respect their tranquillity. Keep a safe distance to avoid disturbing them.

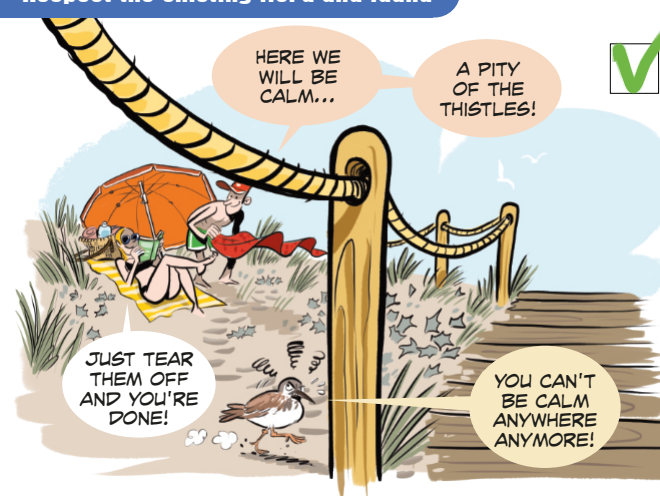
Leave the area just how you would like to find it



✓ Don't leave or bury cigarette butts in the sand.

✓ Take your rubbish and any you may find with you. It will be even cleaner for the next visitor!

Respect the existing flora and fauna



✓ Dunes are extremely delicate ecosystems. Don't walk or lie on them, or use them as shortcuts!

✓ Access the beach only on marked paths.

✓ The posts and ropes that mark out the dunes are not a VIP area.

Keep future generations in mind

✓ Dry posidonia seagrass leaves form a natural barrier to avoid beach erosion.

✓ Thanks to posidonia leaves, we can enjoy beautiful sand beaches.

✓ Dust off as much sand as you can before leaving! Tons of sand are lost every year in our shoes, towels, hair and other belongings.

