

AVARAMENTS TORTUGUES 1997-2016

	1997	1998	1999	2000	2001	2002	2003	2004	2005	2006	2007	2008	2009	2010	2011	2012	2013	2014	2015	2016	2017	2018	2019
MALLORCA	0	2	0	0	2	1	3	49	19	28	52	39	13	16	19	21	9	14	12	27	30	28	28
MENORCA	0	2	1	14	15	21	2	1	1	18	6	8	8	5	1	6	2	9	2	7	2	4	5
EIVISSA	9	17	5	8	14	6	7	0	11	8	12	6	4	2	4	3	8	4	6	17	12	5	18
FORMENTERA	1	1	1	2	14	2	2	0	1	0	0	4	0	3	2	7	2	1	3	3	3	3	10
CABRERA	1	0	0	0	0	1	0	0	1	1	0	2	0	1	0	0	1	0	0	2	0	0	0
	11	22	7	24	45	31	14	50	33	55	70	59	25	27	26	37	22	28	23	56	47	40	61

	1997	1998	1999	2000	2001	2002	2003	2004	2005	2006	2007	2008	2009	2010	2011	2012	2013	2014	2015	2016	2017	2018	2019
VIVA	2	3	3	3	6	3	0	6	7	3	0	8	6	9	1	5	1	10	10	15	9	10	18
FERIDA	2	5	0	2	8	5	2	2	4	11	23	10	0	3	10	9	6	3	0	0	2	4	2
CRÍTIC	0	1	0	5	1	1	1	4	3	8	8	8	5	4	2	5	1	4	0	3	4	2	7
DESC. MODERADA	3	7	2	7	15	10	7	19	4	12	14	12	5	4	2	8	0	3	7	7	7	4	13
DESC. AVANÇADA	4	6	2	7	15	12	4	19	15	21	25	21	9	7	11	10	14	8	6	31	25	20	21
	11	22	7	24	45	31	14	50	33	55	70	59	25	27	26	37	22	28	23	56	47	40	61

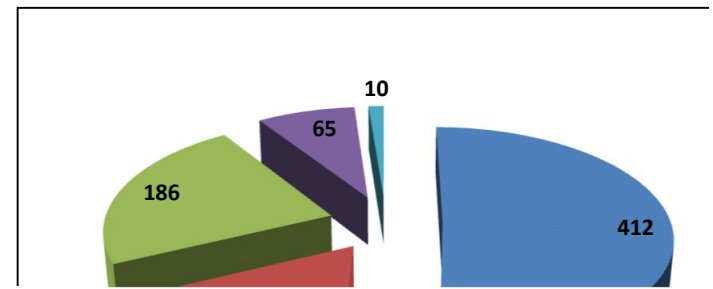
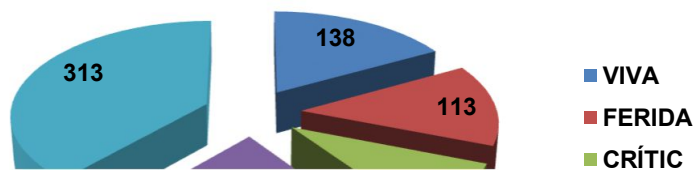
TOTAL AVARAMENTS PER ILLES 1997-2019

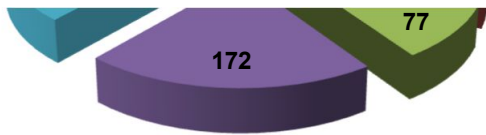
MALL MENC EIVISS FORM CABRERA

412 140 186 65 10

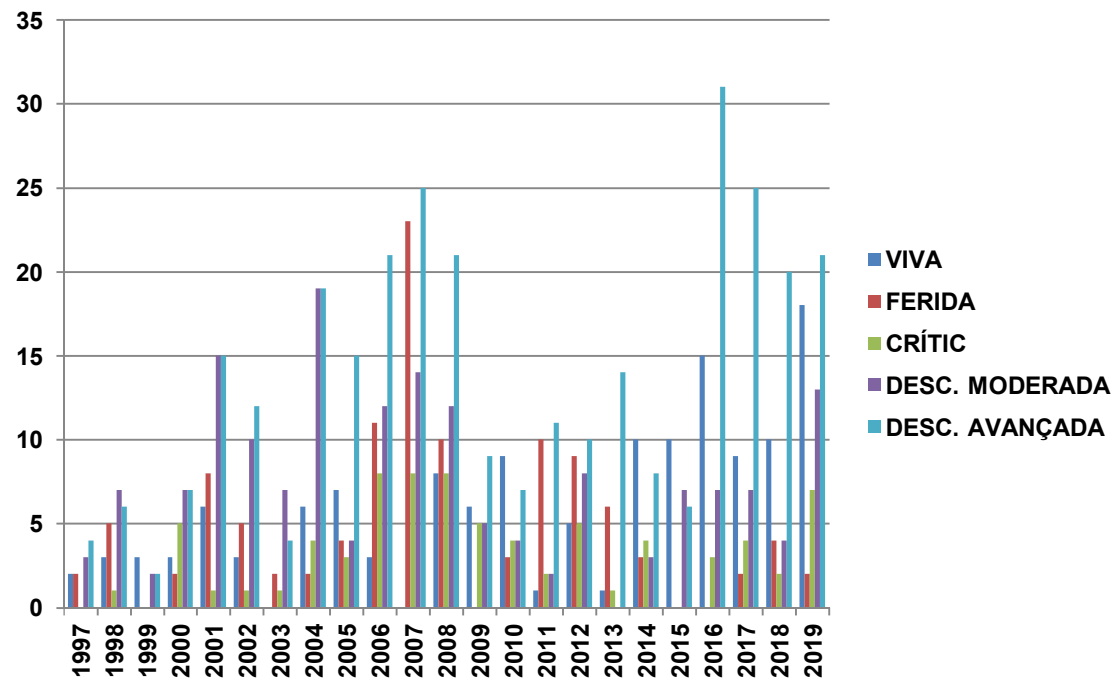
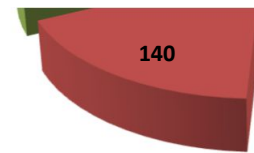
VIVA FERID CRÍTIC DESC. DESC. AVANÇADA

138 113 77 172 313





- DESC. MODERADA
- DESC. AVANÇADA



TOTAL
412
140
186
65
10
813

TOTAL
138
113
77
172
313
813

- MALLORCA
- MENORCA
- EIVISSA

■ FORMENTERA
■ CABRERA