

ENGLISH

# SERRA DE TRAMUNTANA NATURE AREA



GOVERN  
ILLES  
BALEARNS

# THE SERRA DE TRAMUNTANA

The Serra de Tramuntana mountain range sprawls for approximately 90 km, from the southwest to the northeast of Mallorca. With more than a dozen peaks at altitudes of over one thousand metres, these mountains form one of the most emblematic areas on the island. The predominance of calcareous stone in these mountains and its constant interaction with the surrounding water have given rise to a unique landscape abounding with karst formations.

The landscape of the Serra de Tramuntana is noted for its diversity. Here, the woods, with shaded and sunny areas shaped by holm oak and pine forests, Mauritania vine reed and other species, alternate with agricultural fields where olive groves are particularly prevalent.

One of the most significant aspects of this mountain range is the vast wealth of its plant life. The countless endemic species include some extremely rare plants and others with very extensive populations, such as the Balearic St. John's wort (*Hypericum balearicum*). The Serra de Tramuntana is also a refuge for endemic animal species including the

Mallorcan midwife toad (*Alytes muletensis*), while accommodating numerous invertebrates, birds, cave-dwelling species, and more.

The coastline of the Serra de Tramuntana boasts rich *Posidonia oceanica* prairies. Along with the maerl beds and coralline communities, these algae species are worthy of note for their beauty and good state of conservation.

Human activity has been connected with the Tramuntana Mountains since time immemorial. Proof of this can be seen in the stone wall borders and terraces, icehouses, charcoal kilns and colliers' huts, watchtowers, fortifications and water deposits, all of which embody an important part of our history.





## A PROTECTED NATURE AREA

The main objective of the classification of a protected Nature Area is the conservation of its natural and cultural value. The Serra de Tramuntana received its status as a Nature Area through the Balearic Islands Government Resolution of 16 March 2007 (BOIB No. 54 EXT). With a land surface of 62,403 ha and a marine surface of 1,123 ha, this is the largest protected nature area in the Balearic Islands. In fact, its borders cover parts of the municipal areas of Alaró, Andratx, Banyalbufar, Bunyola, Calvià, Campanet, Deià, Escorca, Esporles, Estellencs, Fornalutx, Lloseta, Mancor de la Vall, Palma, Pollença, Puigpunyent, Santa Maria, Selva, Sóller and Valldemossa.

The Natural Resources Management Plan of the Serra de Tramuntana, which was approved by means of Decree 19/2007 (BOIB No. 54 EXT), aims to serve as a general structure for the management of natural resources and values. For such purpose, this plan has divided the area into zones (exclusion, limited use, compatible use and general use) and regulated its use (permitted use, use with authorisation and prohibited use).

The Serra de Tramuntana Nature Area includes the Natural Monument of the Torrent de Pareis, Gorg Blau



and Lluc (which received such status by virtue of Decree 53/2003, of 16 May) and the Natural Monument of les Fonts Ufanés (declared such by Decree 111/2001, of 31 August). Moreover, the Nature Area either partially or completely encompasses different zones that are also included within the Natura 2000 Network (Special Areas of Conservation and/or Special Protection Areas for Birds), protected oak forests and urban protection legislation, such as the Serra de Tramuntana Natural Area of Special Interest (ANEI de Tramuntana), among others.



# REGULATIONS & RULES

- Do not leave any sort of **waste** behind (including organic waste, as it takes a great deal of time to break down, leading to a visual impact on the environment). Please be sure to take all of your waste with you and dispose of it in the selective waste bins near your home or lodging establishment on the island.
- Always **close the gates** as you go through them, to prevent the loss of livestock.

## PERMITTED ACTIVITIES:

- **Non-extreme recreational activities**, providing that they are carried out with respect for nature and that they do not generate excessive noise or lead people to go off the established roads and trails (hiking, bicycle touring, horseback outings).
- **Camping** with advance reservations in designated camping areas: those of Es Pixarells and Sa Font Coberta (Escorca).

## ACTIVITIES THAT REQUIRE AUTHORISATION FROM THE REGIONAL MINISTRY OF THE ENVIRONMENT AND THE OWNER/S OF THE ESTATE/S IN QUESTION

- The practice of **extreme sports** (rock climbing, canyoning, caving, hang gliding, paragliding, abseiling, etc.).
- Holding sports **competitions** (mountain races, mountain biking, etc.).
- Filming and photo shoots for commercial purposes or for documentaries / cultural programmes.
- Scientific studies and research projects.
- Flying **drone-type** planes and similar devices.
- Use of forest materials (**tree felling**), **controlled burning** in agricultural and forest areas. (Please consult: forestal@caib.es)
- **Collection of wildlife species**, whether for aromatic, gastronomic or decorative interest, snails and non-endemic snails for commercial purposes (Please consult with especies@dgcpea.caib.es and autorizacions@dgmambie.caib.es).
- **Camping, bivouac and outdoor overnight stays.**

## PROHIBITED ACTIVITIES

- Walking **dogs** off the lead (Article 1, Section 26 of Law 3/2013, of 17 July, which modifies Article 75, Section 11 of Law 6/2006, of 12 April) and bringing animals into camping areas, with the exception of seeing-eye dogs (IBANAT Board of Directors Resolution of 19 June 2017).
- **Any activities that might be hazardous or cause damage** to the natural environment, people or the existing heritage (Article 60 of Decree 19/2007 of 16 March).
- Lighting **fires** in any forest area between 1 May and 15 October, including recreational and camping areas (Decree 125/2007, of 5 October).
- The entrance, circulation and /or parking of **mopeds, motorbikes and quads** in any of the forests owned by the public administration (Article 52 of Law 13/2005, of 27 December).
- **Circulation or entrance (of people or vehicles)** into expressly prohibited forest areas, roads or trails, without prior express authorisation (Article 76, Section K of Law 21/2015, which modifies Law 43/2003, of 21 November, on Forests).
- Any sort of **sports circuits, hiking or shortcuts off** the established paths and trails (Article 60 of Decree 19/2007, of 16 March).

# INFORMATION OF INTEREST

## To request authorisation:

In person: at the Nature Area Management Office · Online: [espaisnaturalsprotegitgts.caib.es](http://espaisnaturalsprotegitgts.caib.es)

**Ca S'Amitger Interpretation & Information Centre:** (Lluc) Ctra. Lluc a Pollença, s/n. Tf: 971 51 70 70 / 971 51 70 83

**Es Pixarells and Sa Font Coberta campgrounds:** For reservations call: 971 51 70 70 / 971 51 70 83

**Reservations for nature refuge lodging (online):** [refugis@ibanat.caib.es](mailto:refugis@ibanat.caib.es) | info: 971 17 76 52

[seu.conselldemallorca.net/refugis](http://seu.conselldemallorca.net/refugis) | info: 971 17 37 00



Accessibility:

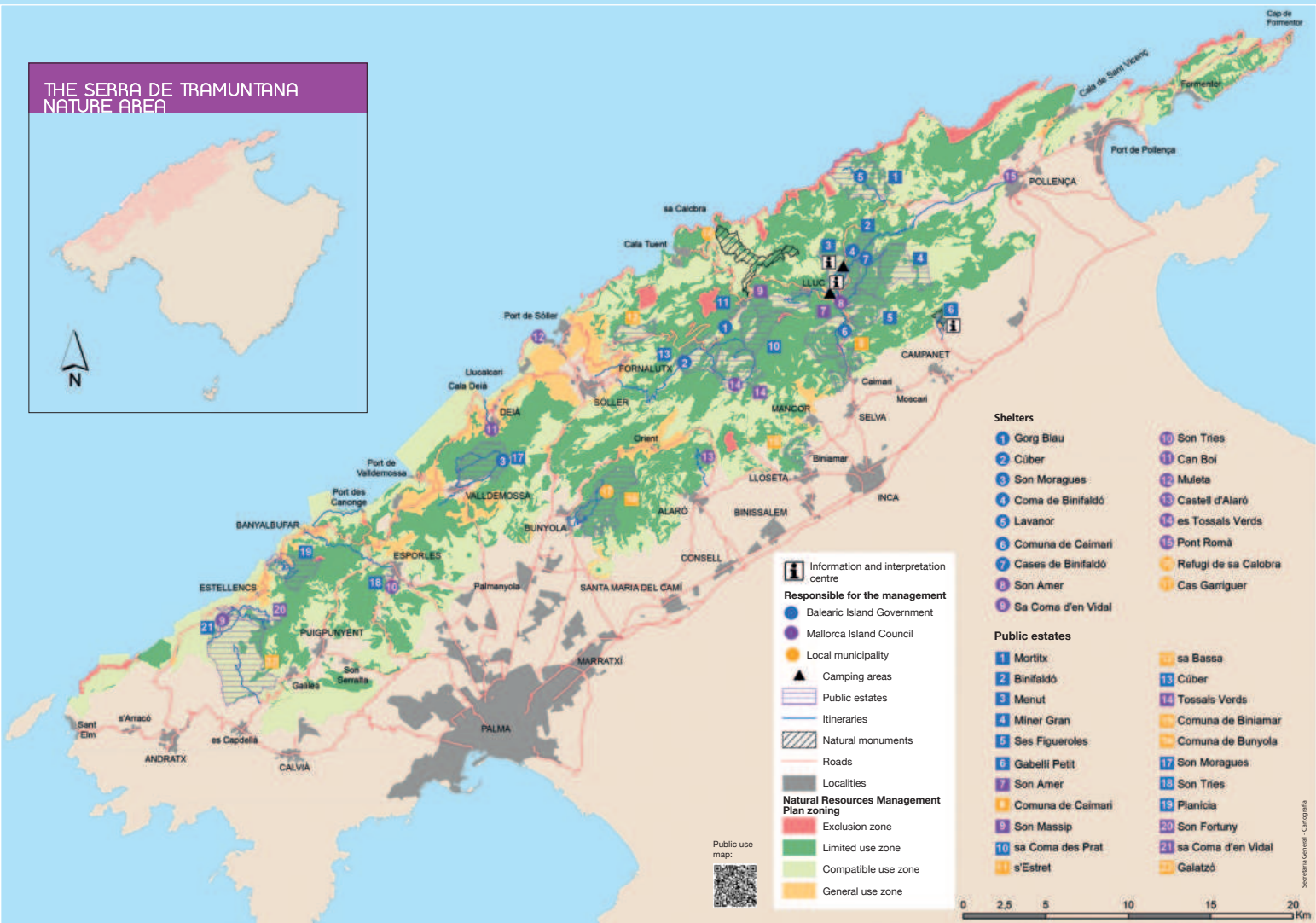


**Nature Area Management Office**

Pol. Son Rossinyol · C/ Gremi Corredors, 10, 1er pis · 07009 Palma  
Ph. 971 17 66 66 / 971 17 76 39

[espaisnaturalsprotegitgts.caib.es](http://espaisnaturalsprotegitgts.caib.es) · @PNSerraTramuntana

# THE SERRA DE TRAMUNTANA NATURE AREA



**i** Information and interpretation centre

**Responsible for the management**

Balearic Island Government

Mallorca Island Council

Local municipality

Camping areas

Public estates

Itineraries

Natural monuments

Roads

Localities

**Natural Resources Management Plan zoning**

Exclusion zone

Limited use zone

Compatible use zone

General use zone

Public use map:



### Shelters

- 1 Gorg Blau
- 2 Cúber
- 3 Son Moragues
- 4 Coma de Binifaldó
- 5 Lavanor
- 6 Comuna de Caimari
- 7 Cases de Binifaldó
- 8 Son Amer
- 9 Sa Coma d'en Vidal
- 10 Son Tries
- 11 Can Boi
- 12 Muletà
- 13 Castell d'Alaró
- 14 es Tossals Verds
- 15 Pont Romà
- 16 Refugi de sa Calobra
- 17 Cas Garriguer

### Public estates

- 1 Mortix
- 2 Binifaldó
- 3 Menut
- 4 Miner Gran
- 5 Ses Figueroles
- 6 Gabellí Pelit
- 7 Son Amer
- 8 Comuna de Caimari
- 9 Son Massip
- 10 sa Coma des Prat
- 11 sa Bassa
- 12 Cúber
- 13 Tossals Verds
- 14 Comuna de Biniamar
- 15 Comuna de Bunyola
- 16 Son Moragues
- 17 Son Tries
- 18 Planícia
- 19 Son Fortuny
- 20 sa Coma d'en Vidal
- 21 Galatzó

