



Photo: S. Torrens

S'ALBUFERETA NATURE RESERVE



Paracatium maritimum
Photo: S. Torrens

Reserva natural de S'Albufereta
Lista de Correos E-07458
Can Picafort 07458 · Mallorca
Tel. 971 89 22 50 · Fax 971 89 21 58
reserva.albufereta@gmail.com

CONTACT

- Please remain on the marked paths and trails at all times.
- Visitors are not allowed to enter the Nature Reserve by boat, on horseback or in motorised vehicles.
- Please keep the environment clean. Be sure to take with you any waste that you generate during your visit.
- Dogs and cats can damage unique habitats like this one and are therefore not allowed in the Nature Reserve.
- Please do not engage in sports or competitive activities in the Nature Reserve.
- The collection or removal of plants is not allowed.
- Please do not disturb the animals.
- Construction activities of any type require the corresponding previous municipal permit.

RULES AND RECOMMENDATIONS

The Reserve can be accessed via public bus line from the Port of Pollença or Alcúdia, or by bicycle or private car. Visitors in private cars are asked to park in the nearest urban area.

HOW TO GET TO THE NATURE RESERVE

WATER, SALT AND PLANT LIFE



Photo: C. Encinas

S'Albufereta abounds with plants that are typical of wetland areas with heavy saltwater influence, given the proximity to the sea. Thus, glasswort prairies and tamarisk groves are prevalent amid the Reserve's lagoons, streams and canals. In fact, the tamarisk forest that lines the El Rec stream is one of the most noteworthy communities of its type in Mallorca. No less striking for their unique hydrogeological features are the varying surges of the saltwater springs known as Els Ulls del Rec, which emerge in the streambed itself.

The presence of the endemic plant *Limonium alcidianum*, which only grows in the brackish waters of S'Albufereta and the neighbouring Albufera, as well as the only Balearic community of another type of static, the *Limonium algarvense*, along with many other species, make this an exceptional site of botanical interest.

VISITING THE NATURE RESERVE

Visitors are invited to use the itineraries marked on this pamphlet, which offer a viewing of the area's most prominent values without damaging the natural environment or disturbing the species that inhabit it and avoiding possible conflicts with private property.

Organized groups wishing to visit the Reserve are asked to make arrangements in advance..

S'Albufereta is a home and a breeding ground for many species, some of which are endangered. It is important to bear in mind that pets are not allowed in the Reserve, as they could disturb the resident communities.

The coastal wetlands of S'Albufereta are one of the natural treasures of the Bay of Pollença, thanks to their singular landscape and their ornithological and botanical value.

The Nature Reserve covers a surface of 211 hectares, with additional peripheral protection of its surrounding 290 hectares, where certain land use and activities are regulated to prevent unwanted environmental impact.



Ardea purpurea
Photo: S. Torrens



Foto: B. Perelló

A BIRD REFUGE



Pandion haliaetus
Photo: S. Torrens

Like other Mediterranean wetlands, S'Albufereta is an essential sanctuary along the annual migratory paths of countless aquatic birds. Moreover, during the harsh summer droughts that typify the Mediterranean climate, wetlands like S'Albufereta become genuine oases for many bird species.

Watching a group of Eleonora's falcons (*Falco eleonorae*) as they hunt in the late afternoon or catching a fortunate glimpse of an osprey (*Pandion haliaetus*) are just some of the pleasant rewards to be enjoyed by the attentive and quiet visitor.

HOW IT BECAME PROTECTED

S'Albufereta was declared a Nature Reserve by virtue of Decree 121/2001 (BOIB Number 130, of 30 October 2001), and four years later it was reclassified as a Special Nature Reserve through Law 5/2005, of 26 May, on the Conservation of Environmentally Important Sites (locally known as the law LECO). The S'Albufereta Natural Resource Management Plan was also approved by means of the Government Council Resolution of 19 October 2001 (BOIB Number 130, of 30 October 2001). Yet the site had al-

ready been protected by legislation years earlier, thanks to its declaration as a Natural Area of Special Interest in 1991, by virtue of Law 1/1991, of 30 January, on Natural Spaces and Urban Regulation for Areas of Special Protection of the Balearic Islands (locally known as the LEN).

S'Albufereta also forms part of the Natura 2000 Network, an initiative designed to contribute to the conservation of plant and animal species and their natural habitats in protected natural spaces around Europe.

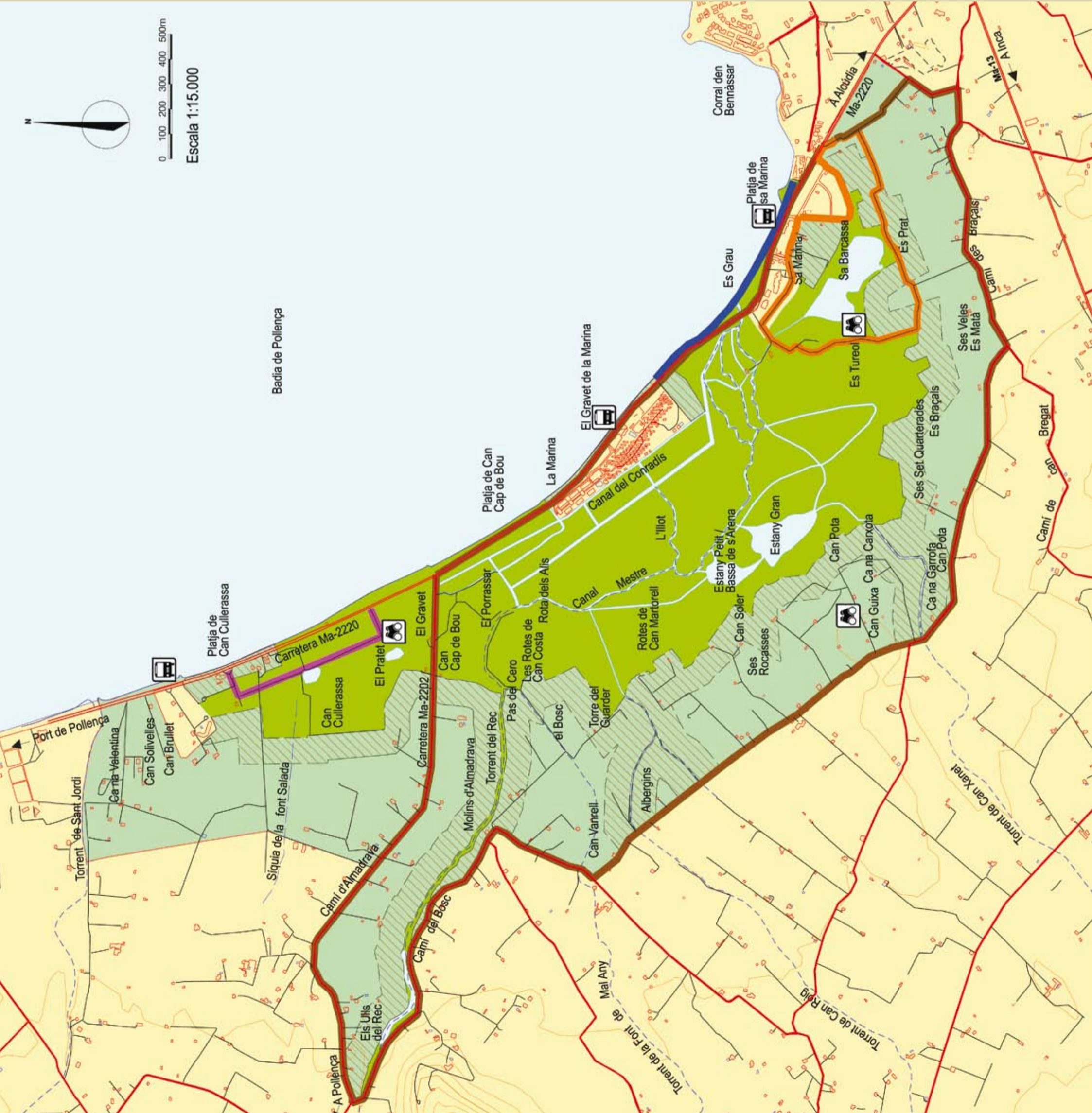


Photo: B. Perelló

S'ALBUFERETA NATURE RESERVE



0 100 200 300 400 500m
Escala 1:15.000



- | | | | |
|--|-----------------------|--|------------------------------------|
| | Nature reserve | | Prat de Can Cullerassa itinerary |
| | Outer protection area | | Sa Barcassa itinerary |
| | Hunting safety zone | | Bicycle route around s'Albufereta* |
| | Pools and lagoons | | Platja de sa Marina itinerary |
| | Roads | | Observation point |
| | Canals | | Bus stop |
| | Streams | | |
| | Paths | | |

* Coinciding with sections of highways Ma 2220 and Ma 2202 and paved roads including Camí d'Almadrava and Camí del Bosc, until it becomes Camí des Braçals.